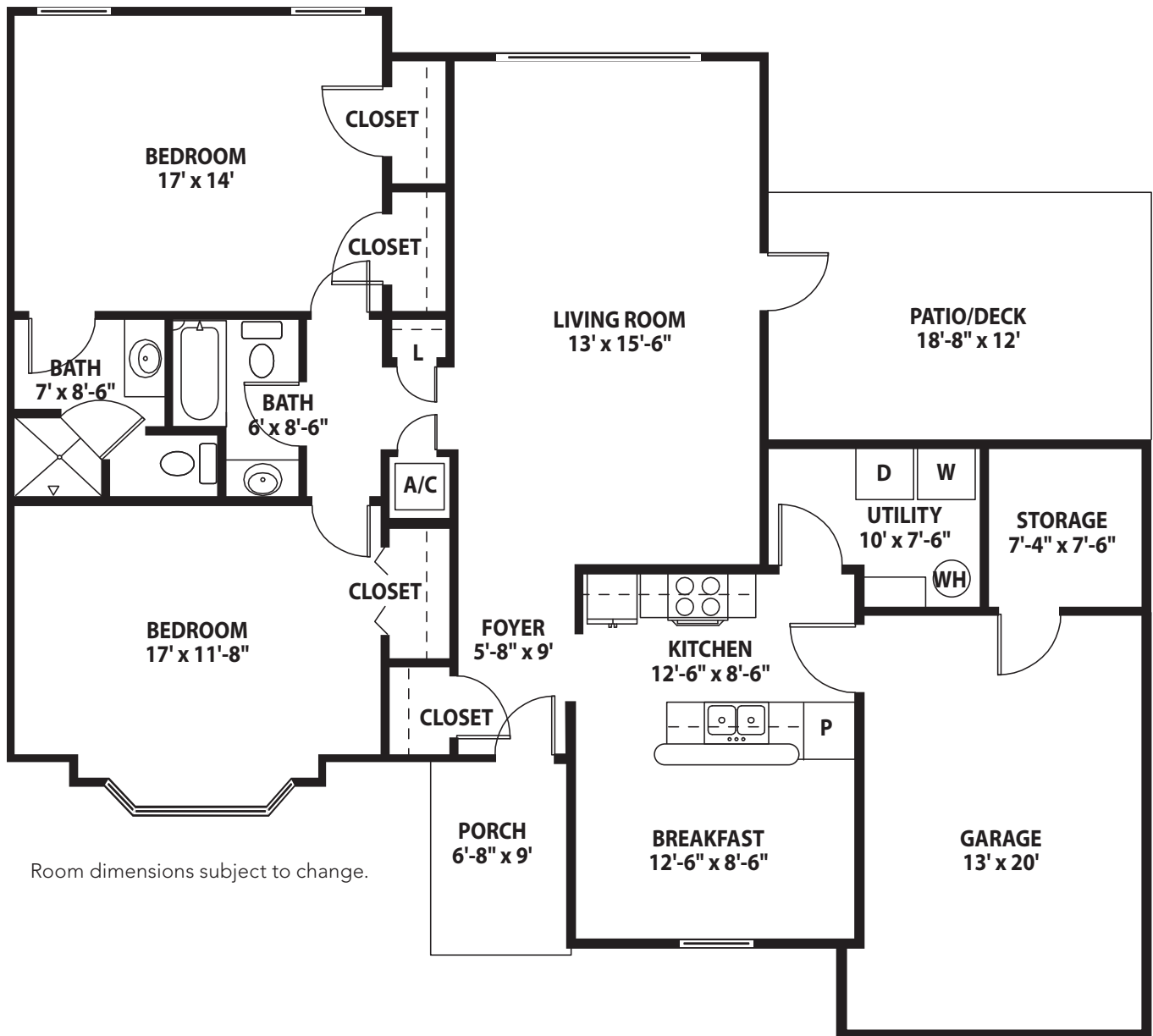




## LIVE OAK

Two Bedroom with Study, Two Bath  
Approx. 867 Sq. Ft.



Room dimensions subject to change.

## SERVICES & AMENITIES

### RESIDENT SERVICES

- ✓ Most utilities included in one monthly service fee
- ✓ Weekly housekeeping and linen service
- ✓ Scheduled transportation
- ✓ Interior and exterior maintenance
- ✓ Life Enrichment Programming offering outings, entertainment and socialization
- ✓ Cable television
- ✓ 24/7 emergency response system
- ✓ Formal and casual dining options
- ✓ Professional landscaping
- ✓ Worship services — all denominations
- ✓ Concierge services

### COMMUNITY AMENITIES

- ✓ Beautifully appointed lobby and atrium
- ✓ Chapel
- ✓ Brookshire Brothers Grocery
- ✓ Fitness and cardio area
- ✓ Private dining for catered events
- ✓ Billiards room
- ✓ Card room
- ✓ Bistro
- ✓ Multipurpose auditorium
- ✓ Library
- ✓ Walking paths



# PINECREST

 AN MRC HEALTHY LIVING COMMUNITY

1302 Tom Temple Drive • Lufkin, TX 75904  
936.634.1054 • [www.mrcpinecrest.org](http://www.mrcpinecrest.org)



License #: 000424



EQUAL HOUSING  
OPPORTUNITY